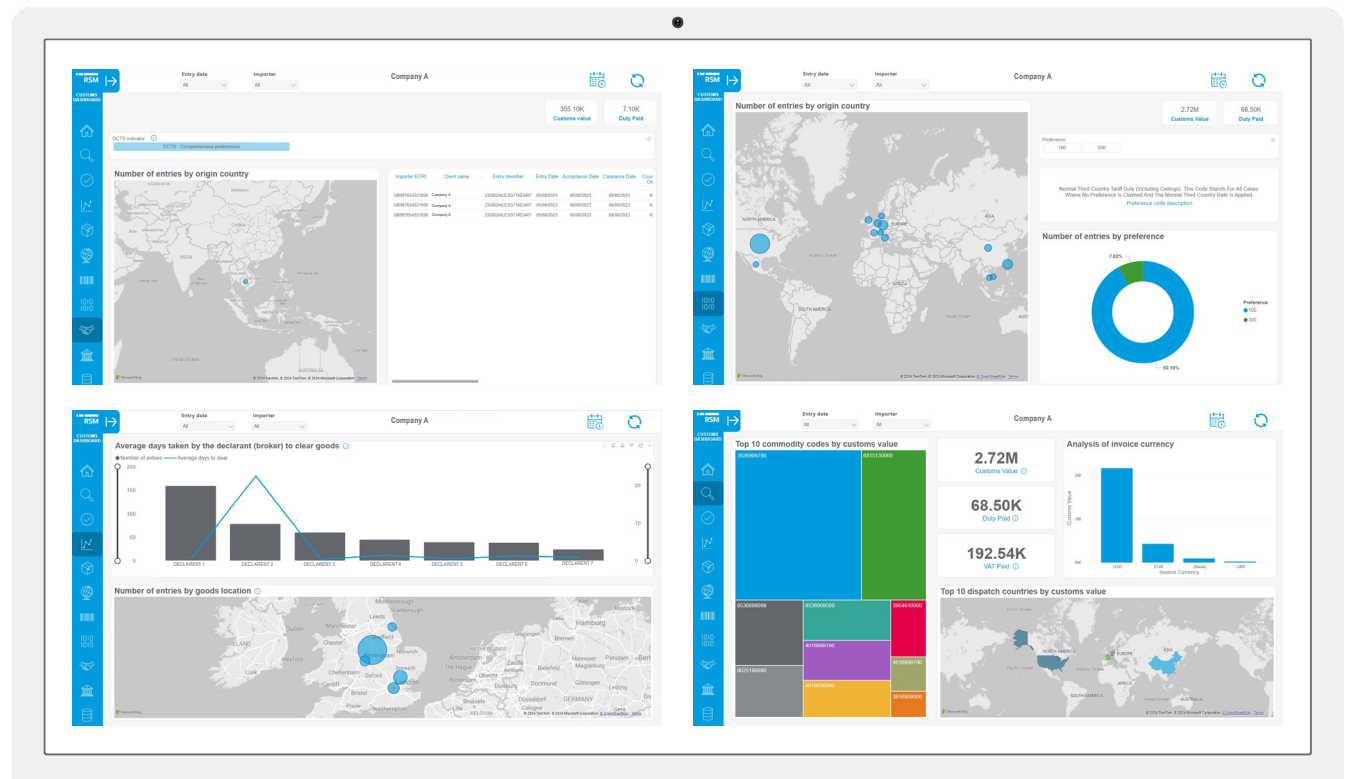


Tax Technology for the real world



Reporting for duty: Know your customs duty position and control costs

RSM's Customs Dashboard distils your customs import and export data to enable businesses to identify and illustrate opportunities for duty savings and areas of non-compliance. It can also provide KPIs to support procurement decisions and supply chain teams. The dashboard will also provide significant support for HMRC customs audits.



Click to view our RSM Custom Dashboard video

The RSM Customs Dashboard provides a clear illustration of a business' customs duty footprint, with detail on:



- assessing commodity codes for accuracy within;
- authorised special procedures;
- confirmation of the customs regimes in use;
- supplying data to support supply chain and procurement management;
- support for HMRC audits;
- identifying savings when importing from preference giving countries;
- provision of clearance times by agents, to ensure KPIs are met;
- evaluating agent use to reduce customs declaration errors; and
- flagging shipments that are not proper to the business.

Why use the RSM Customs Dashboard



HMRC is intensifying its customs compliance approach, by for example, issuing penalties to businesses that fail to meet deadlines when responding to HMRC requests for import entry information. Such measures immediately put businesses on the back foot before HMRC have even begun their compliance review assessment.

By maintaining customs duty compliance, businesses may be recognised as low risk by HMRC with less chance of being audited. Additionally, it ensures the business is paying the right amount of duty and import VAT, at the right time.

Contact one of our specialists:



Jason Wellden

Director, Customs and International Trade
jason.wellden@rsmuk.com



Brad Ashton

Partner, Customs and International Trade
brad.ashton@rsmuk.com



Tom Gilbert

Partner, Tax Technology
tom.gilbert@rsmuk.com

rsmuk.com

The UK group of companies and LLPs trading as RSM is a member of the RSM network. RSM is the trading name used by the members of the RSM network. Each member of the RSM network is an independent accounting and consulting firm each of which practises in its own right. The RSM network is not itself a separate legal entity of any description in any jurisdiction. The RSM network is administered by RSM International Limited, a company registered in England and Wales (company number 4040598) whose registered office is at 50 Cannon Street, London EC4N 6JJ. The brand and trademark RSM and other intellectual property rights used by members of the network are owned by RSM International Association, an association governed by article 60 et seq of the Civil Code of Switzerland whose seat is in Zug.

RSM UK Corporate Finance LLP, RSM UK Legal LLP, RSM UK Restructuring Advisory LLP, RSM UK Risk Assurance Services LLP, RSM UK Tax and Advisory Services LLP, RSM UK Audit LLP, RSM UK Consulting LLP and RSM UK Creditor Solutions LLP are limited liability partnerships registered in England and Wales, with registered numbers OC325347, OC402439, OC325349, OC389499, OC325348, OC325350, OC397475 and OC390886 respectively. RSM UK Employer Services Limited, RSM UK Tax and Accounting Limited and RSM UK Management Limited are registered in England and Wales with numbers 6463594, 6677561 and 3077999 respectively. All limited companies and limited liability partnerships are registered at 6th Floor, 25 Farringdon Street, London, EC4A 4AB. The UK group of companies and LLPs trading as RSM is a member of the RSM network. RSM is the trading name used by the members of the RSM network. Each member of the RSM network is an independent accounting and consulting firm which practises in its own right. The RSM network is not itself a separate legal entity in any jurisdiction.