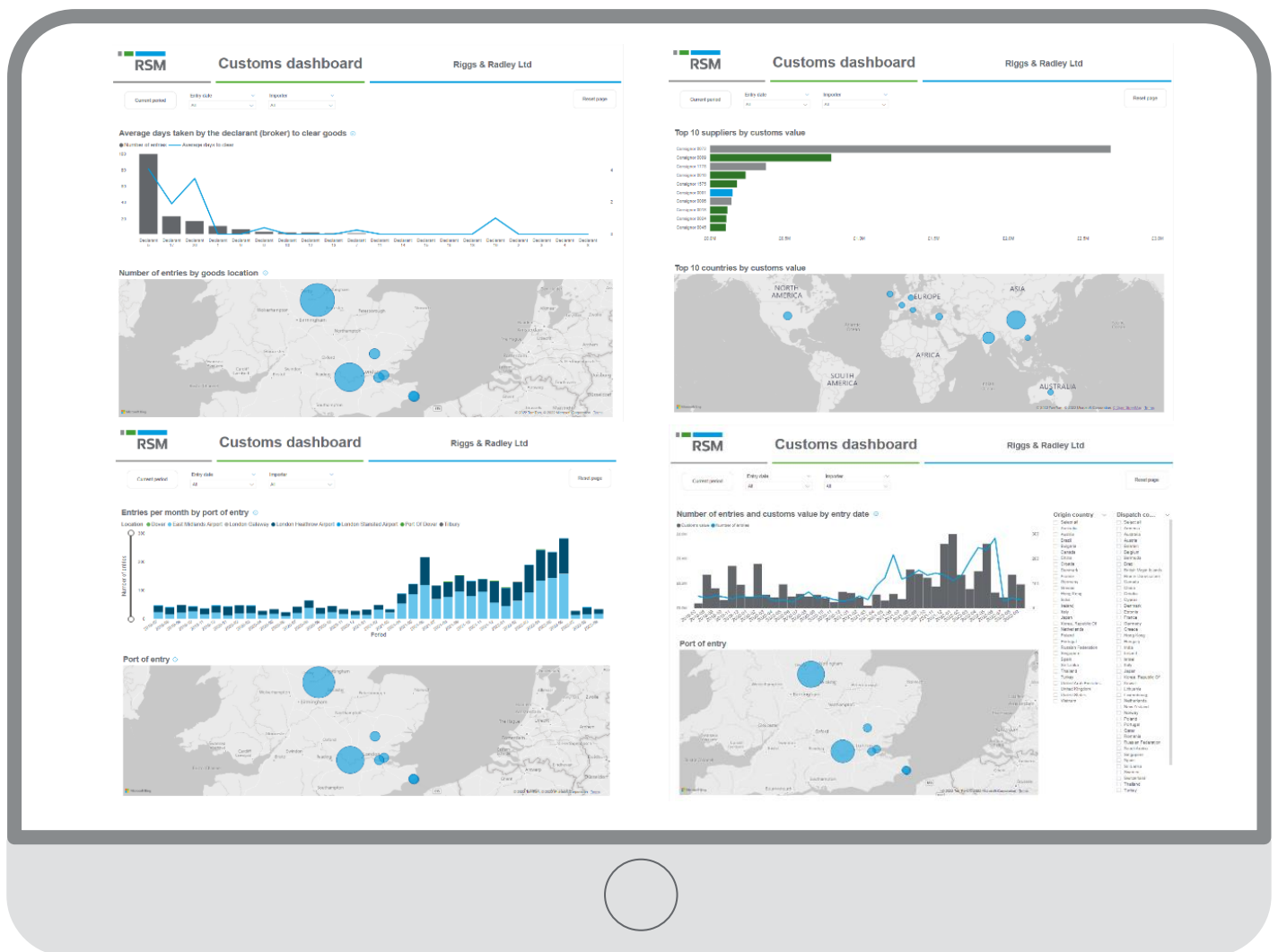


Tax Technology for the real world

RSM customs dashboard

Reporting for duty – Know your customs duty position and control costs

RSM's customs dashboard distils your customs import and export data to enable businesses to identify and illustrate opportunities for duty savings and areas of non-compliance. It can also provide KPIs to support procurement decisions and supply chain teams. The dashboard will also provide significant support for HMRC customs audits.



Key features and benefits

The RSM customs dashboard provides a clear illustration of a business' customs duty footprint, with detail on the following areas:

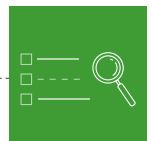
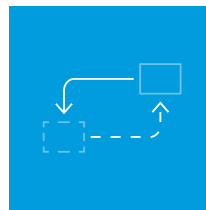
- The commodity codes used and whether the right commodity codes are being used within authorised special procedures.
- Confirmation of the customs regimes being used.
- Provision of data to support supply chain and procurement management.
- Use as a core element of custom compliance.
- Provides support for HMRC audits.
- Where savings could be gained when importing from preference giving countries.
- Provision of clearance times by agents, to determine whether KPIs are being met.
- The number of agents being used and whether this number could be reduced to minimise risk of errors on customs declarations.
- Identification of shipments that are not proper to the business.

Why use the RSM customs dashboard?

HMRC are approaching customs compliance more seriously than ever, evidenced by penalties being issued, for example, where businesses have failed to respond to HMRC requests for import entry information within specified time limits. This approach immediately puts businesses on the back foot, before HMRC have even begun their assessment of the relevant documentation they require for compliance review.

Being abreast of customs duty compliance, means that the business will be potentially recognised as low risk by HMRC, with less chance of being audited. Additionally, it means that the business is paying the right amount of duty and import VAT, at the right time.

View our RSM customs dashboard video below



Contacts



Brad Ashton
Partner, Customs and
International Trade
brad.ashton@rsmuk.com



Jason Wellden
Associate Director, Customs
and International Trade
jason.wellden@rsmuk.com



Tom Gilbert
Partner, Tax Technology
tom.gilbert@rsmuk.com

The UK group of companies and LLPs trading as RSM is a member of the RSM network. RSM is the trading name used by the members of the RSM network. Each member of the RSM network is an independent accounting and consulting firm each of which practises in its own right. The RSM network is not itself a separate legal entity in any jurisdiction.

The RSM network is administered by RSM International Limited, a company registered in England and Wales (company number 4040598) whose registered office is at 50 Cannon Street, London EC4N 6JJ. The brand and trademark RSM and other intellectual property rights used by members of the network are owned by RSM International Association, an association governed by article 60 et seq of the Civil Code of Switzerland whose seat is in Zug.

RSM UK Corporate Finance LLP, RSM UK Legal LLP, RSM UK Restructuring Advisory LLP, RSM UK Risk Assurance Services LLP, RSM UK Tax and Advisory Services LLP, RSM UK Audit LLP, RSM UK Consulting LLP and RSM UK Creditor Solutions LLP are limited liability partnerships registered in England and Wales, with registered numbers OC325347, OC402439, OC325349, OC389499, OC325348, OC325350, OC397475 and OC390886 respectively. RSM UK Employer Services Limited, RSM UK Tax and Accounting Limited and RSM UK Management Limited are registered in England and Wales with numbers 6463594, 6677561 and 3077999 respectively. RSM Northern Ireland (UK) Limited is registered in Northern Ireland at Number One Lanyon Quay, Belfast, BT1 3LG with number NI642821. All other limited companies and limited liability partnerships are registered at 6th Floor, 25 Farringdon Street, London, EC4A 4AB. The UK group of companies and LLPs trading as RSM is a member of the RSM network. RSM is the trading name used by the members of the RSM network. Each member of the RSM network is an independent accounting and consulting firm which practises in its own right. The RSM network is not itself a separate legal entity in any jurisdiction.