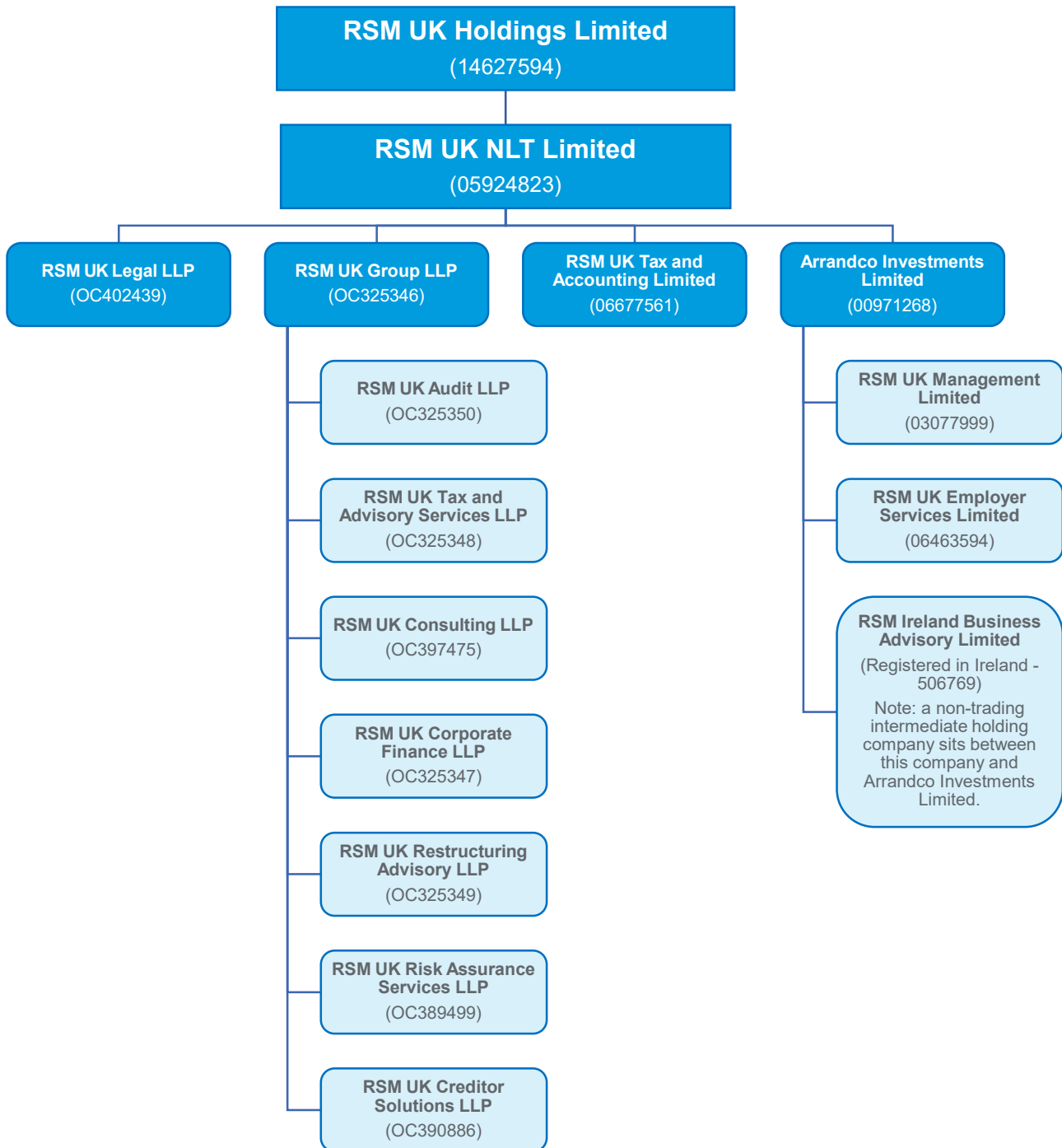


RSM UK Group

Structure chart (key entities)

1 April 2024



This is a simplified structure chart of the RSM UK group (the group of entities held directly or indirectly by RSM UK Holdings Limited). It only shows the key entities in the group. Control ownership is 100% for all of the entities shown above, save that the individual members of the LLPs (i.e., the RSM UK partners) and their interests in the LLPs are not shown. The ordinary shares in RSM UK Holdings Limited are held in a trust structure for the benefit of the partners in the firm.

All the entities above are registered in England and Wales (with their registered office at 6th Floor, 25 Farringdon Street, London, United Kingdom, EC4A 4AB) except for RSM Ireland Business Advisory Limited which is registered in the Republic of Ireland (with its registered office at Trinity House, Charleston Road, Ranelagh, Dublin 6, D06 C8X4, Ireland).